

# QFM PC SERIES

## MALE COUPLINGS ISO 16028

**'FOR CONNECTION UNDER  
STATIC PRESSURE CONDITIONS'**

### INTRODUCTION

The PC Series Male Couplings can be connected, by hand, with pressures up to 350 bar locked in the male half only, without creating any fluid leakage into the environment. The hose line to the female will need to have zero pressure to allow the PC Male to operate correctly.

### COUPLING

Conforms to the ISO 16028 connection sizes. They will connect with our HD Female series.

#### Examples:

PC 10 connects with HD 10 couplings.

PC 12 connects with HD 12 couplings.

PC 19 connects with HD 19 couplings.

### APPLICATIONS

Mobile plant and attachments where exposure to the sun causes pressure to develop due to thermal expansion of trapped fluid.

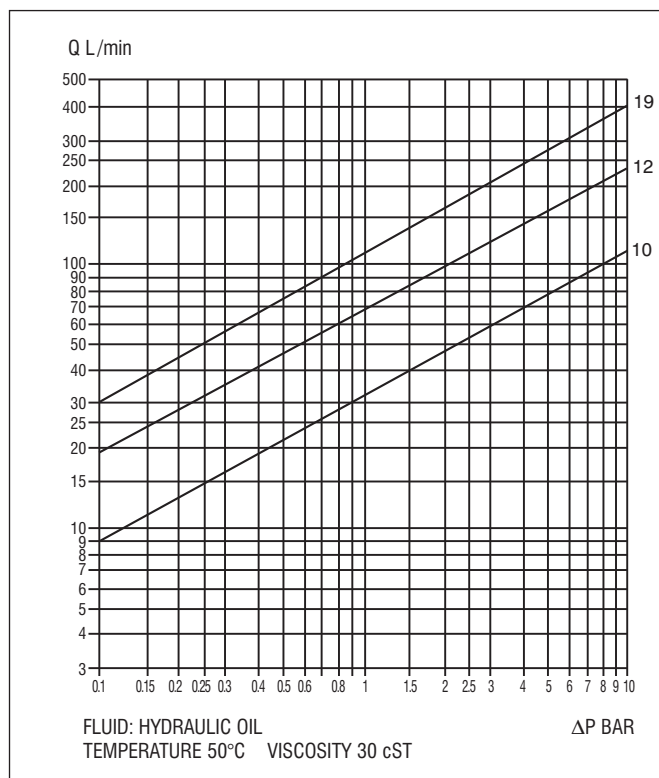
### BENEFITS

- Connects under high pressure, by hand.
- Flat faces can easily be wiped clean before connection to prevent the ingress of contaminants into the circuit.
- No air intrusion during connection.
- Clean disconnection - non-spill design.
- Locking sleeve helps prevent accidental disconnection.
- Coupling can rotate whilst connected.
- Bi-directional flow

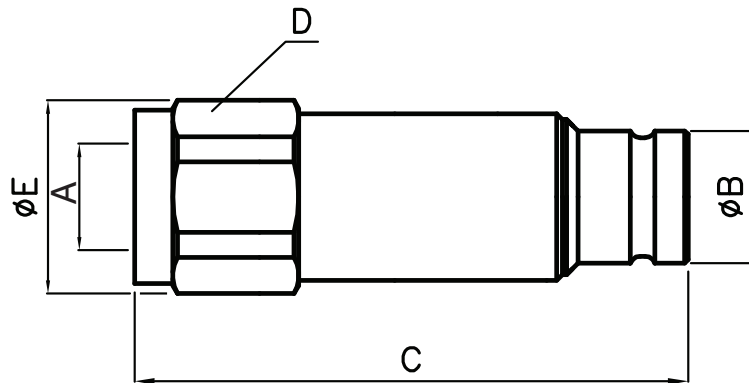
### SPECS

- Operating temperature range: -20°C to +100°C.
- Fluid loss during disconnection: 0 to 0.02ml.
- Maximum pressure for connection by hand: 350 bar in male, zero pressure in female.

### PRESSURE DROP FLOW CHART



QFM PC MALE SERIES



DIMENSIONS

Type and size	Nominal diameter of hose	A	ØB	ØC	D
PC 10	10	3/8"	19.8	87	30
PC 10	10	1/2"	19.8	90	30
PC 12	12	1/2"	24.5	98	41
PC 12	12	3/4"	24.5	104	41
PC 19	19	3/4"	30	114	46
PC 19	19	1"	30	114	46

MATERIALS

Zinc nickel plated steel, PTFE & nitrile seals.

OPERATION

**To connect:** wipe the mating surfaces clean, align the couplings & push together. Twist the outer sleeve on the female and the coupling is locked.

**To disconnect:** the hose line must be at zero pressure, twist the sleeve to align its notch with the locking ball. Pull back the sleeve and the coupling springs apart.

PRESSURE RATINGS

Type and size	Maximum working pressure coupled to HQ Series female	Burst pressure coupled to HQ Series female	Burst pressure HCP Male
PC 10	350	1500	1500
PC 12	350	1500	1400
PC 19	350	1450	1450

